

A "SNAPSHOT" IN TIME

A glance at some services, and numbers for April 2020 to March 2021

A Year Unlike Any Other...

When reflecting on the year that was, it is simple to see it was unlike anything we had faced before. However despite a global pandemic, the Pukete Neighbourhood House continued to be a leader in serving its community...



Supporting All Ages

946 - Attendees at regular "Craft Group" sessions. Crafting garments for some of our most vulnerable through Plunket & NICU

Finding An Advocate

500 - Visits with our Family Support Advocate and Justice of the Peace

Social Connection

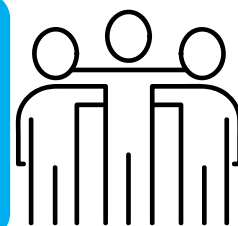
801 - Attendees at Scone Wednesday, Salad Series & Soup Sessions. Building social connection and combatting isolation

Food Rescue

5916 - Annual visitors on average to our "Freestore". Preventing the waste of food, and feeding our community

Wonderful People

413 - Examples of our community, giving up their time to volunteer alongside our dedicated team. 28 - Employed staff, working on average 1019 hours during a "normal" week. 8 - Volunteer Committee members around our table



Caring For Our Children

15,714 - Attendances across all of our Ministry of Social Development approved OSCAR Programmes. 2136 - Arriving early for Before School care. 10,573 - Joining as from 3pm for After School Care. 3005 - Spending their school holidays with us, including 872 at our NEW "social housing" programme!

Utilising Space

45 - Instances of our community hiring our space and/or equipment to host events and social gatherings!

Community Collection

66 - Attendees of "social service providers" at regular networking events. Connecting providers across our city



Embracing Culture

400 - Approximate women and children from our Arabic community, attending a range of cultural celebrations and events. Bringing our migrant community together, and building a stronger sense of belonging



PUKETE
NEIGHBOURHOOD
HOUSE



TE WHARE
TAKIWA
O PUKETE